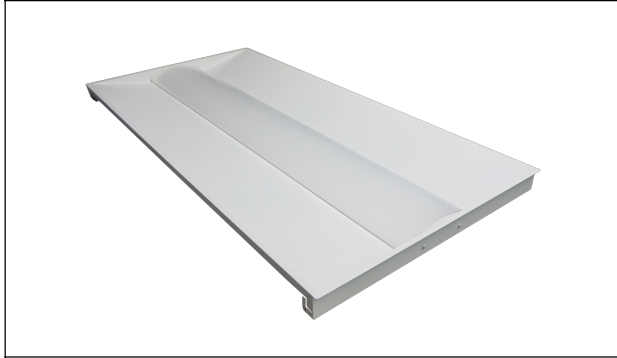


CPS LED LIGHTING



PRODUCT NAME : COMPACT TUNABLE TROFFER
PRODUCT SKU : CPS-CTR-24-34/38/45W-UL-3550

PRODUCT DESCRIPTION

The compact tunable troffer is built with the latest technology and design. This product fills any interior space with LED creating a brighter space. A smaller compact design paired with tunable technology helps to reduce the skus needed for an upgrade.

Additional add ons offered such as emergency battery backup, sensors, & controls.

APPLICATIONS

OFFICES, HALLWAYS, MULTIPURPOSE ROOMS, CONFERENCE ROOMS, INDOOR LIGHTING.

ORDERING INFORMATION

| SERIES | SIZE | WATTAGE | VOLTAGE | CCT |
|---------------------------------------|-------|-----------|--------------|------------|
| CPS-CTR | 2 X 4 | 34/38/45W | UL= 120-277V | 3500-5000K |
| EXAMPLE: CPS-CTR-24-34/38/45W-UL-3550 | | | | |

CERTIFICATIONS & RATINGS

| |
|------------|
| IP20 RATED |
| DLC: YES |
| UL: YES |
| ETL: NO |
| NSF: NO |

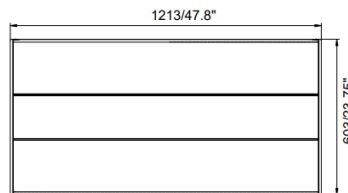
CPS RECOMMENDATIONS:

| |
|--------------------|
| EMB: available |
| CONTROL: available |
| SENSOR: available |

SPECIFICATIONS

| |
|---|
| LM/W: 125 |
| WARRANTY: 7 YEARS |
| DIMMING: 0-10V CONTINUOUS, PRODUCT CAN DIM TO 10% |
| TEMPERATURE RATED: (-20°C to +50°C)(-4°F to 122°F) |
| LENS: FROSTED |
| VOLTAGE: 120-277V |
| HOUSING: COLD-ROLLED STEEL, FROSTED PMMA LENS |
| CCT: 3500-5000K (ADJUSTBLE / TUNABLE) |
| MOUNTING: SURFACE MOUNTING, RECESSED LIGHTING FIXTURE |

DIMENSIONS & PHOTOMETRICS



PHOTOMETRIC TEST LIST

| | LUMENS RATED | WATTS RATED | EFFICACY | VOLTAGE |
|------------------------------|--------------|-------------|----------|----------|
| CPS-CTR-24-34/38/45W-UL-3550 | 5625 | 45 | 125 | 120-277V |
| | 5670 | 45 | 126 | |
| | 5715 | 45 | 127 | |
| | 4940 | 38 | 130 | |
| | 4978 | 38 | 131 | |
| | 5016 | 38 | 132 | |
| | 4522 | 34 | 133 | |
| | 4556 | 34 | 134 | |
| | 4590 | 34 | 135 | |